



**Consolidated Report on Trincomalee displacement
 following the escalation of violence
 starting April 11, 2006
 as of April 29, 2006**

CONTRIBUTING ORGANISATIONS FOR REPORT PURPOSE:

ACF (Action Contre la Faim), TRO, PIN, TDDA, AHAM, Poonchcholai, World Concern, UMCOR, JRS, Sewa Lanka, ZOA, Medicos del Mundo (MDM) Spain, EHED/Caritas, Save the Children in Sri Lanka, NRC, PCT (Mental Health and Psychosocial Unit, General Hospital of Trincomalee), OXFAM, ECDA, CARE, People in Need (PIN), UMCOR, UNHCR, UNICEF, WFP, IOM and UNOCHA

Total number of families: 6,252
Total number of people: 21,554
As of April 29, 2006 – Sources: UN and NGOs

General notes on data:

- In some places, it seems that people may be staying in public places during night only.
- In LTTE controlled areas, information indicates that not all displaced people are registered and that there may be a number of unregistered people just staying in jungle areas.

Government controlled areas of Muthur

	Name of place	Number of families	Number of people	No of children under 5
1	Kilivetty school	686	2,085	
2	Barathipuram school	260	824	
3	Mallighathivu school	489	1,822	237
4	Sacred Heart church – Iruthayapuram	165	850	
5	Kanguveli school	250	850	
6	Periyaveli	261**	913*	
7	Al Taj church	25	100	
	Subtotal	2,136	7,444	

Numbers are consolidated from the joint UN and NGO teams collected on April 28, 2006

Please note that stocks reported by agencies are not included as only a couple reported on what is available and there is no clear intention per geographic location.



SECOND DRAFT
 Information compiled by the Joint team of Trincomalee
 United Nations and Non Governmental Organisations
 Date of reporting 29th April 2006
 UN OCHA Trincomalee Office

* Numbers in italics indicates that no concrete figures have been given, but the number of families has been multiplied by the coefficient 3.5 used by UNHCR.

** Number indicates registered families. It has been noted that only about 75 families were there during day. The remaining could be night displacement only. It needs further verification.

LTTE controlled areas of Muthur

	Name of place	Number of families	Number of people	No of children under 5
1	Pattalipuram	1,947*	6,584	
2	Nallor	189*	663	
3	Unknown number scattered – not yet registered			
	Subtotal	2,136	7,247	

Numbers are consolidated from the joint UN and NGO teams collected on April 28, 2006

* Numbers for both Pattalipuram and Nallor reflect number of displaced people that has registered in that area.

Eachilampattai

	Name of place	Number of families	Number of people	No of children under 5
1	Verugal	40	120	
2	Ilankathurai Mughattuwarem	484	1,694	
3	Mawadichenai	22*	77**	
4	Punniyadi	200*	600	
5	Valaithottam	40	40	
6	Kalladi	60	180	
	Subtotal	846	2,711	

Numbers are consolidated from the joint UN and NGO teams collected on April 28, 2006

* In Mawadichenai the reported number of people are staying with host families, and in Punniyadi 170 are with host families and 30 in a school.

** Numbers in italics indicate that no concrete figures have been given, but the number of families have been multiplied by the coefficient 3.5 used by UNHCR.

Town and Gravets

	Name of place	Number of families	Number of people	No of children under 5
1	Bharathi Tamil M.V. – Varothayanagar	175	628	
2	Kalaimahal Tamil M.V. – Anbuvelipuram	92	337	
3	Four Square Church – Anbuvelipuram	128	460	
4	Saraswathi M.V. - Kappalthurai	365	1,315	
5	Vellaimanal	27	92	

Please note that stocks reported by agencies are not included as only a couple reported on what is available and there is no clear intention per geographic location.



SECOND DRAFT

Information compiled by the Joint team of Trincomalee
United Nations and Non Governmental Organisations
Date of reporting 29th April 2006
UN OCHA Trincomalee Office

6	Paddy Marketing Board	7	30	
7	Selvanayagapuram School	166	550	
8	Our Lady of Lourds Church, Palaiyuttu	55	209	
9	IGL church	38	175	
10	St Anthony's church	81	356	
	Subtotal	1,134	4,152	

All numbers are from UNHCR dated as of April 28, 2006

Background information

Over the past few weeks, Trincomalee has seen an escalating level of violence. This violence has resulted in loss of lives, damage to houses and property and thousands of people being displaced. The displacement has been caused by two "categories" of violence: on the one hand bomb and explosion attacks resulting in mobs and communal attacks and killings and on the other hand the military operation launched by the security forces targeting LTTE controlled areas. Compounded, these sequences of violence have resulted in a currently assessed displacement of roughly 6,250 families equalling 21,500 people.

The displacement in Town and Gravets and government controlled areas of Muthur was caused nearly exclusively by the violence before the military operation. The displacement in LTTE controlled areas (LTTE controlled areas of Muthur and Echilampattai) was a direct cause of the military operations. It is however most likely that the overall situation of prevailing insecurity over the past few weeks will have a direct impact on the eventual return of the displaced families, wherever they are and whatever the immediate cause for their displacement was.

Many people have been killed and injured in the past weeks' violence. While there are no official records, the reports following the explosion at the vegetable market and the ensuing violence reported 19 dead and at least 45 injured. Those numbers do not include the number of soldiers killed in the various claymore attacks, nor does it include number of people that were killed in the ensuing communal violence. The reported number people killed and injured due to the military operations against LTTE controlled areas are 16 killed and 27 injured.

FOOD: There is an immediate need for food in most areas. Supplies are not available and people's livelihood opportunities have been curtailed.

WATER AND SANITATION: Safe drinking water and proper sanitation facilities are immediate needs in most locations of displacement.

LIVELIHOOD AND FOOD: Livelihood opportunities have been affected not only for displaced populations, but for many people not necessarily being directly displaced. Fear of entering neighbouring communities with whom there has been clashes and killing or the fear of going to the sea following the air shelling and bombing has been reported.

Please note that stocks reported by agencies are not included as only a couple reported on what is available and there is no clear intention per geographic location.



SECOND DRAFT

Information compiled by the Joint team of Trincomalee

United Nations and Non Governmental Organisations

Date of reporting 29th April 2006

UN OCHA Trincomalee Office

HEALTH: Access to health services is adversely affected due to either lack of staffing (health staff do not report to work due to fear), lack of transport, and fear of having to pass neighbouring communities to reach the health facilities.

EDUCATION: Two schools in LTTE controlled area were partly destroyed by the military operation. While the second school term technically started on April 24, many schools remain closed. Most of the public displacement is hosted in schools. In addition, a large number of teachers have not reported to their schools out of fear.

SHELTER: While many people are in need of emergency shelter due to the displacement, the number of people in Town and Gravets who have lost their houses is estimated between 40 – 50. For Muthur, the number of families that have lost their houses need to be assessed in more detail,

RESPONSE: Teams Humanitarian organisations (UN, INGOs and NGOs) have assessed the situation and started to deliver assistance. As a result, food, plastic sheeting, water supply, purification tablets, and non food relief items have started to reach the displaced people.

HUMANITARIAN ACCESS: There were initial problems to bring humanitarian relief items into LTTE controlled areas. The General Officer Commanding has however ensured that humanitarian assistance should be given permission without restrictions, as long as the organisations provide a list of transported items to the checkpoints.

CONDITIONS FOR RETURN AS EXPRESSED BY DISPLACED PEOPLE:

- People are secured that violence will stop on all levels
- Establishing of Geneva talks and positive results
- Opportunities to restore livelihood are restored
- Provided houses are still there

Please note that stocks reported by agencies are not included as only a couple reported on what is available and there is no clear intention per geographic location.



Government controlled areas of Muthur

Locations of Displacement and Population figures

	Name of place	Number of families	Number of people	No of children under 5
1	Kilivetty school	686	2,085	
2	Barathipuram school	260	824	
3	Mallighathivu school	489	1,822	237
4	Sacred Heart church – Iruthayapuram	165	850	
5	Kanguveli school	250	850	
6	Periyaveli	261**	913*	
7	Al Taj church	25	100	
	Subtotal	2,136	7,444	

Numbers are consolidated from the joint UN and NGO teams collected on April 28, 2006

* Numbers in italics indicates that no concrete figures have been given, but the number of families has been multiplied by the coefficient 3.5 used by UNHCR.

** Number indicates registered families. It has been noted that only about 75 families were there during day. The remaining could be night displacement only. It needs further verification.

1. Kilivetty School (2085 people)

Population breakdown of people displaced in Kilivetty school are as followed:

Place of Origin	Families	Persons
RB4	420	1256
Thanganagar	15	39
Kilivetty	172	582
Kumarapuram	48	108
Menkamam	2	7
Bharathipuram	24	82
Kanguveli	5	11
Total	686	2085

Sector based information and needs

Please note that stocks reported by agencies are not included as only a couple reported on what is available and there is no clear intention per geographic location.



SECOND DRAFT

Information compiled by the Joint team of Trincomalee
 United Nations and Non Governmental Organisations
 Date of reporting 29th April 2006
 UN OCHA Trincomalee Office

ASSISTANCE NEEDED					
Shelter/NFRI	Clothing	Food	Watsan	Health	Education
200 fam staying under trees inside the school. Shelter needed.	Clothes needed for those who fled from far.	Food has been provided, but not regularly and not sufficient.	One well available. 25 feet deep. Not sufficient for drinking purposes.	Kilivetty hospital closed. Access to medical care limited. Nearest hospital in Serunuwara is, but people fear due to being in Sinhala area.	School is not functioning. Neither are nearby schools from where students are coming.
		Individual family cooking.	8 toilets available. 6 are functional.		Need to find ways to reopen schools.
			Pits are small. Will need to be emptied often.		
		Fire wood needed.	Jerry cans and buckets.		Uniform and school material.
			Additional water storage.		
			Gully suckers		
ASSISTANCE PROVIDED					
Shelter/NFRI	Clothing	Food	Watsan	Health	Education
UNHCR: 40 tarpauline sheets		Sarvodaya is taking over responsibility for food until government rations take over.	ACF: water tanks (5m3 and 1m3)		
			Water trucking		
			Toilet kits		

2. Barathipuram school

ASSISTANCE NEEDED					
Shelter/NFRI	Clothing	Food	Watsan	Health	Education
Fire wood		YES	1 common toilet only		

Please note that stocks reported by agencies are not included as only a couple reported on what is available and there is no clear intention per geographic location.



SECOND DRAFT
 Information compiled by the Joint team of Trincomalee
 United Nations and Non Governmental Organisations
 Date of reporting 29th April 2006
 UN OCHA Trincomalee Office

Common cooking not practised					
ASSISTANCE PROVIDED					
Shelter/NFRI	Clothing	Food	Watsan	Health	Education

3. Mallighathivu school

ASSISTANCE NEEDED					
Shelter/NFRI	Clothing	Food	Watsan	Health	Education
40% of the people lost their clothes		URGENT	Water supply trucking and bowsering needed. Only 1 tank of water of 5m3	Health assessment needed as some complaints of illness. ANC & WBC clinics.	School uniforms and learning material
Common cooking not practiced. Needs to be looked at with appropriate material			1 well with water (not drinkable) used for washing and bathing		
Fire wood needed			2 toilets available but are full. Gully sucker needed.		
Jerry cans and buckets			Partitioning of toilets needed		
ASSISTANCE PROVIDED					
Shelter/NFRI	Clothing	Food	Watsan	Health	Education

4. Sacred Heart church – Iruthayapuram

ASSISTANCE NEEDED					
Shelter/NFRI	Clothing	Food	Watsan	Health	Education
Fire wood for cooking + common cooking pots and ustensils		URGENT	1 well needs to be cleaned. Water not drinkable,	Health assessment needed as some complaints of	School uniforms and learning material

Please note that stocks reported by agencies are not included as only a couple reported on what is available and there is no clear intention per geographic location.



SECOND DRAFT

Information compiled by the Joint team of Trincomalee
 United Nations and Non Governmental Organisations
 Date of reporting 29th April 2006
 UN OCHA Trincomalee Office

			purification tablets needed	illness. ANC & WBC clinics.	
Church not willing to keep people in. Sheltering activities should be looked at if no return to original location			Emergency latrines needed as only one is available		
Jerry cans and buckets					
ASSISTANCE PROVIDED					
Shelter/NFRI	Clothing	Food	Watsan	Health	Education

5. Kanguveli school

ASSISTANCE NEEDED					
Shelter/NFRI	Clothing	Food	Watsan	Health	Education
ASSISTANCE PROVIDED					
Shelter/NFRI	Clothing	Food	Watsan	Health	Education

6. Periyaveli

ASSISTANCE NEEDED					
Shelter/NFRI	Clothing	Food	Watsan	Health	Education
ASSISTANCE PROVIDED					
Shelter/NFRI	Clothing	Food	Watsan	Health	Education

7. Al Taj church

ASSISTANCE NEEDED					
Shelter/NFRI	Clothing	Food	Watsan	Health	Education
Jerry cans			Water supply not available in school. Needs to be collected outside.		
Buckets			4 toilets under construction. Need to		

Please note that stocks reported by agencies are not included as only a couple reported on what is available and there is no clear intention per geographic location.



SECOND DRAFT

Information compiled by the Joint team of Trincomalee

United Nations and Non Governmental Organisations

Date of reporting 29th April 2006

UN OCHA Trincomalee Office

			finish them, which could solve problems. 2 toilets available but damaged.		
ASSISTANCE PROVIDED					
Shelter/NFRI	Clothing	Food	Watsan	Health	Education

Please note that stocks reported by agencies are not included as only a couple reported on what is available and there is no clear intention per geographic location.



LTTE controlled areas of Muthur

Human scale of emergency

The entire population of LTTE controlled Muthur, estimated at over 16,000 are either directly or indirectly affected. There continues to be conflicting reports on the scale of displacement. The warning of imminent attack prompted displacement prior to the incident and people remain fearful of congregating in large numbers and returning home. It is estimated by people in Sampoor that about 20% people return home during day to conduct business and take care of poultry and cattle. The people prefer to remain dispersed around and some have even setup camp near culverts which they would use as shelter in case of subsequent attacks. According to figures provided by the LTTE, 16 people were killed including four boys aged 2-16. A list of 49 injured has been provided from register of the LTTE health unit which includes 24 children aged 3 mths to 17 years, the nature and extent of injuries are not yet known. The ICRC facilitated transfer of four critically injured to hospitals in Batticaloa and Trincomalee town. There were no reports of any unaccompanied/separated children, however, this needs further checking as population is dispersed. The LTTE do not claim any military casualties

Vulnerability of displaced populations

The numbers and locations remain fluid. The local officials (Grama Sevaka) have initiated a process of registration and local NGOs have been assigned the task of providing cooked food for the displaced. On the fourth day of displacement interaction with the displaced revealed that their main concerns were related to fear of further attacks, adequacy of food being provided, provision of sleeping mats and utensils for water management. The sanitation facilities available to the displaced is however quite inadequate by standards. The initial reaction of host communities has been positive. There is reported shortage of rice, fuel, etc and there is no electricity since the attack. With the relatively low number of casualties and the recent nature, it is difficult to comment on the medium to longer term vulnerabilities.

There are concerns on the psycho-social effects of the shelling. Some reported reactions among the children include night fears, fear at any sudden noise, hesitation to play in grounds, need to be close to parents, crying during the nights. Adults mainly complain of sleepless due to nightmares, body pain, headaches, tremors, respiratory problems, behaviours changes (from deep sadness to hysterical crying), lost of appetite, continuous fear and alert to any sound or strange movement. Men are not able to work and feel "blocked". Some women have problems to breast-feed babies (stress post-trauma) and there is no medical assistance regarding this issue.

The local resources (health volunteers, psychosocial workers and School teacher) have requested to the PCT to support them on the identification of early functional symptoms and its treatment and on the prevention of psychopathologies developing.

There are also increased reports of attendance at the local health centre with daily attendance increasing from an average of 75 to between 97-236 in the days following the attack. There are reports of patients suffering from shock.

Please note that stocks reported by agencies are not included as only a couple reported on what is available and there is no clear intention per geographic location.



Institutional arrangements for coordinating response

- The LTTE have set up mechanism of coordination for distribution of supplies and designated GS and local NGOs by location. All agencies are requested to report to the PDS who will direct them to locations for distribution. TRO, AHAM, Poonchollai have been among the first NGOs to respond with humanitarian aid.

Immediate needs

Generally there are no glaring gaps in the humanitarian response that has been initiated. There will be a need for

- Continuing with providing cooked meals
- Providing supplies such as sleeping mats, buckets, tarpaulin sheets, etc
- Providing services for supplying water
- Initiating psycho-social support activities
- Medical personnel to fill gaps
- MRE among displaced, especially in areas that were under attack
- Advocacy to re-open schools

Locations of Displacement and Population figures

	Name of place	Number of families	Number of people	No of children under 5
1	Pattalipuram	1,947*	6,584	
2	Nallor	189*	663	
3	Unknown number scattered – not yet registered			
	Subtotal	2,136	7,247	

Numbers are consolidated from the joint UN and NGO teams collected on April 28, 2006

* Numbers for both Pattalipuram and Nallor reflect number of displaced people that has registered in that area.

2. Patalipuram School (6584 people)

Population breakdown of people displaced in Patalipuram School are as followed:

Place of Origin	Families	Persons
Sampoor	550	
Cheniyur	114	
Karakadachenay	339	
Kataparichan	25	
Kanguweli	5	
Menkamam	25	
Kilivetti	5	
Barathipuram	26	
Padalipuram	400	
LB3	13	

Please note that stocks reported by agencies are not included as only a couple reported on what is available and there is no clear intention per geographic location.



SECOND DRAFT

Information compiled by the Joint team of Trincomalee
 United Nations and Non Governmental Organisations
 Date of reporting 29th April 2006
 UN OCHA Trincomalee Office

Kunnitheevu	200	
Navaradnapuram	245	
Total	1947	6584

Sector based information and needs

ASSISTANCE NEEDED					
Shelter/NFRI	Clothing	Food	Watsan	Health	Education
Cooking pots and tools		YES	Water Supply	Medical team needed (2 doctors for 95,000 people)	
Clothes			Water purification	Medical tool kits	
Mats			Emergency latrines		
Mosquito Nets					
Hygiene kits					
ASSISTANCE PROVIDED					
Shelter/NFRI	Clothing	Food	Watsan	Health	Education
ZOA distributed toilet soap and laundry soap to 300 families		SCiSL delivered for 180 people rice, tin fish, noodles, grain, dhal, biscuits, soja meat packets	ACF provided a water tank of 5m3 with water pump. Water supply is available at the school location.	MDM donated part of an IDA Emergency Kit to the Patalipuram Health Center	
World Vision distributed through ZOA 24 tarpolin sheets		EHED /Caritas delivered 250 packs for 3 families for 3 days (750 families): (rice, sugar, dhal, tea, tin fish, washing and toilet soap, dry fish, soy meat, onions, potatoes, 145 packs of milk powder)	UNICEF distributed 10 boxes of water purification tablets		
ACF provided jerry cans and buckets		ZOA Food for 300 families for 3 days (rice, sugar, dhal, tea leave, dry fish,			

Please note that stocks reported by agencies are not included as only a couple reported on what is available and there is no clear intention per geographic location.



SECOND DRAFT

Information compiled by the Joint team of Trincomalee
 United Nations and Non Governmental Organisations
 Date of reporting 29th April 2006
 UN OCHA Trincomalee Office

		soy meat, tin fish)			
UNICEF distributed 20 tarpolin sheets					
ASSISTANCE PLANNED / STOCKS					
Shelter/NFRI	Clothing	Food	Watsan	Health	Education
ACF will deliver additional buckets		SCiSL has 1,500 rations (1 family for 2 days) ready to be delivered	ACF will deliver additional water tank (5m3) and water trucking	MDM will continue delivery of necessary drugs	UNICEF is working with the with the Zonal Education Office to get schools reopened.
SCiSL has in stand by tarpolin sheets		EHED/Caritas is willing to continue food delivery	ZOA has Emergency Latrines ready	MDM will provide mental health support	UNICEF has committed to provide school and uniform material.
SCiSL has 1,500 kitchen ustensils		WFP is ready in 6 days			UNICEF has committed to rebuild the damaged schools and replace damaged furniture.
SCiSL has 1,500 pieces of clothes (sarangs, bed sheets, children clothes)					
UNICEF has common cooking pots, jerry cans, buckets, mats, lanterns etc,					

3. Nallor School (189 families - 663 people)

Sector based information and needs

ASSISTANCE NEEDED					
Shelter/NFRI	Clothing	Food	Watsan	Health	Education
Jerry cans		YES	Water Supply +	NO MAJOR HEALTH	

Please note that stocks reported by agencies are not included as only a couple reported on what is available and there is no clear intention per geographic location.



SECOND DRAFT

Information compiled by the Joint team of Trincomalee
 United Nations and Non Governmental Organisations
 Date of reporting 29th April 2006
 UN OCHA Trincomalee Office

			trucking	ISSUES REPORTED YET	
Buckets			Water tank		
Tarpolin sheets / tents			Emergency Latrines		
Bed sheets / mats					
Cooking pots and ustensils					
Hygiene kits					
ASSISTANCE PROVIDED					
Shelter/NFRI	Clothing	Food	Watsan	Health	Education
TRO distributed 15 tarpolin sheets		TRO has started food distribution	TRO distributed 5 boxes of Water Purification Tablets		
ASSISTANCE PLANNED / STOCKS					
Shelter/NFRI	Clothing	Food	Watsan	Health	Education
SCiSL and World Concern will provide as of 30 th April 242 soaps (T), 242 soaps (L), 242 boxes of mosquito coils, 484 boxes of matches, 2,440 candles, 242 sleeping mats, 1210 plastic plates, 1210 plastic cups		SCiSL and World Concern will provide food items for 6 days as of 30 th April With 2,425 kg of rice, 250 kg of sugar, 250 kg of dhall, 242 Pkt of milk powder	ACF will bring a water tank + water trucking		
ACF will bring jerry cans and buckets		WFP will start covering in 6 days			

Please note that stocks reported by agencies are not included as only a couple reported on what is available and there is no clear intention per geographic location.



Eachilampattai

Locations of Displacement and Population figures

	Name of place	Number of families	Number of people	No of children under 5
1	Verugal	40	120	
2	Ilankathurai Mughattuwarem	484	1,694	
3	Mawadichenai	22*	77**	
4	Punniyadi	200*	600	
5	Valaithottam	40	40	
6	Kalladi	60	180	
	Subtotal	846	2,711	

Numbers are consolidated from the joint UN and NGO teams collected on April 28, 2006

* In Mawadichenai the reported number of people are staying with host families, and in Punniyadi 170 are with host families and 30 in a school.

** Numbers in italics indicate that no concrete figures have been given, but the number of families have been multiplied by the coefficient 3.5 used by UNHCR.

ASSISTANCE NEEDED					
Shelter/NFRI	Clothing	Food	Watsan	Health	Education
ASSISTANCE PROVIDED					
Shelter/NFRI	Clothing	Food	Watsan	Health	Education
UNICEF distributed 10 tarpauline sheets in Verugal			UNICEF distributed water purification tablets.		
ASSISTANCE PLANNED / STOCKS					
Shelter/NFRI	Clothing	Food	Watsan	Health	Education
IOM has more than 2,000 hurricane lamps		IOM has 4,000 bags of rice (5kg) and 800 packs of tea (400g)	Oxfam has a water bowser + 1 additional to be deployed to track 60,000 to 100,000 liters / day		

Please note that stocks reported by agencies are not included as only a couple reported on what is available and there is no clear intention per geographic location.



SECOND DRAFT

Information compiled by the Joint team of Trincomalee

United Nations and Non Governmental Organisations

Date of reporting 29th April 2006

UN OCHA Trincomalee Office

Oxfam can engage on clothes			Oxfam has 2 gully suckers		
UNHCR has for 1,000 families : mats, plastic sheeting / tents, kitchen sets and hygiene items					
Oxfam can engage on plastic sheeting			Oxfam can provide Emergency latrines (pits style) up to 100		
Oxfam can engage on sanitary packs					

IOM offers transportation of goods with trucks.

UNHCR has 4 trucks ready is situation needs deployment and after approval from office in Colombo.

Please note that stocks reported by agencies are not included as only a couple reported on what is available and there is no clear intention per geographic location.



Town and Gravets

Locations of Displacement and Population figures

	Name of place	Number of families	Number of people	No of children under 5
1	Bharathi Tamil M.V. – Varothayanagar	175	628	
2	Kalaimahal Tamil M.V. – Anbuvelipuram	92	337	
3	Four Square Church – Anbuvelipuram	128	460	
4	Saraswathi M.V. - Kappalthurai	365	1,315	
5	Vellaimanal	27	92	
6	Paddy Stores	7	30	
7	Selvanayagapuram School	166	550	
8	Our Lady of Lourd's Church, Palaiyuttu	55	209	
9	IGL church	38	175	
10	St Anthony's church	81	356	
	Subtotal	1,134	4,152	

All numbers are from UNHCR dated as of April 28, 2006

1. Bharathi Tamil M.V. – Varothayanagar

Sector based information and needs

ASSISTANCE NEEDED					
Shelter/NFRI	Clothing	Food	Watsan	Health	Education
School space occupied by people. To start school UNICEF will provide temporary shed		Common cooking is going on. DS promised to provide food.	More latrines needed. Oxfam is working this school to follow up the WATSAN needs.	.	Need for additional school space.
ASSISTANCE PROVIDED					
Shelter/NFRI	Clothing	Food	Watsan	Health	Education
SCiSL and UNICEF provided NFRI		Common cooking kitchen utensils provided by UNICEF	ACF provided 4 latrines. Oxfam looking into the needs	DPDHS has mobilized a team to visit regularly	UNICEF has facilitated temporary school space with the ZEO.
					UNICEF has provided school and uniform material
					UNICEF will provide 3

Please note that stocks reported by agencies are not included as only a couple reported on what is available and there is no clear intention per geographic location.



SECOND DRAFT
 Information compiled by the Joint team of Trincomalee
 United Nations and Non Governmental Organisations
 Date of reporting 29th April 2006
 UN OCHA Trincomalee Office

					temporary structures (if displacement continues).
--	--	--	--	--	---

Assistance provided by UMCOR, Oxfam, ACF, ZOA and SLRCS

2. Kalaimahal Tamil M.V. – Anbuvelipuram

Sector based information and needs

ASSISTANCE NEEDED					
Shelter/NFRI	Clothing	Food	Watsan	Health	Education
Shelter for the families needed. UNICEF will provide.		Food supply is not stable. SCiSL is providing some assistance. Caritas promised to provide vegetable and if not supplied PIN will supply	Need for an arrange bathing place. Oxfam will do it.	Medical support and first aid material needed.	
ASSISTANCE PROVIDED					
Shelter/NFRI	Clothing	Food	Watsan	Health	Education
UNICEF provided plastic sheeting.	SCiSL provided clothes and bed sheets	UNICEF provided common cooking pots and utensils.	ACF provided some assistance	SLRCS provided hygiene kits	UNICEF has provided school material.
NFRI. ZOA provided NFRI					

Assistance provided by OfFER, Oxfam and ZOA

3. Four Square Church – Anbuvelipuram

Sector based information and needs

ASSISTANCE NEEDED					
Shelter/NFRI	Clothing	Food	Watsan	Health	Education
Need more		Availability of			

Please note that stocks reported by agencies are not included as only a couple reported on what is available and there is no clear intention per geographic location.



SECOND DRAFT

Information compiled by the Joint team of Trincomalee
 United Nations and Non Governmental Organisations
 Date of reporting 29th April 2006
 UN OCHA Trincomalee Office

space for people. Tents needed		food is unstable.			
ASSISTANCE PROVIDED					
Shelter/NFRI	Clothing	Food	Watsan	Health	Education
NFRI provided by UNICEF			ZOA provided watsan needs	SLRCS provided hygiene kits	

Assistance provided by OfFER, IOM, ZOA, LEADS and SLRCS

4. Saraswathi M.V. - Kappalthurai

Sector based information and needs

ASSISTANCE NEEDED					
Shelter/NFRI	Clothing	Food	Watsan	Health	Education
Temporary sheds for common cooking needed.		Inadequate food supply. PIN can provide Vegetables.	Toilets facilities needed. Oxfam will work on it.		
ASSISTANCE PROVIDED					
Shelter/NFR	Clothing	Food	Watsan	Health	Education
NFRI provided by SCiSL		Kitchen Utensils (common cooking) provided by UNICEF			School material provided by UNICEF.
UNICEF provided 5 plastic sheets through LEEADS and other NFRI's.					UNICEF will provide 2 temporary school structures (if displacement continues)

Additional assistance provided by ACF, Oxfam, UNHCR, OfFER, ZOA and MDM.

5. Vellaimanal

Please note that stocks reported by agencies are not included as only a couple reported on what is available and there is no clear intention per geographic location.



Sector based information and needs

ASSISTANCE NEEDED					
Shelter/NFRI	Clothing	Food	Watsan	Health	Education
			Watsan facilities needed. Need temporary toilet.		
ASSISTANCE PROVIDED					
Shelter/NFRI	Clothing	Food	Watsan	Health	Education

6. Paddy Stores

ASSISTANCE NEEDED					
Shelter/NFRI	Clothing	Food	Watsan	Health	Education
ASSISTANCE PROVIDED					
Shelter/NFRI	Clothing	Food	Watsan	Health	Education

7. Selvanayagapuram School

ASSISTANCE NEEDED					
Shelter/NFRI	Clothing	Food	Watsan	Health	Education
Mats needed. Expected World Vision will deliver.					
ASSISTANCE PROVIDED					
Shelter/NFRI	Clothing	Food	Watsan	Health	Education
		Kitchen utensils for common cooking provided by UNICEF	UNICEF established 15,000 L/day water supply capacity and continue to work on drainage and sanitation.	DPDHS has mobilized a team to visit regularly.	UNICEF has provided school material and will provide 2 temporary school structures if displacement persists.

Assistance provided by WACCO

8. Our Lady of Lourd's Church, Palaiyuttu

ASSISTANCE NEEDED

Please note that stocks reported by agencies are not included as only a couple reported on what is available and there is no clear intention per geographic location.



SECOND DRAFT

Information compiled by the Joint team of Trincomalee

United Nations and Non Governmental Organisations

Date of reporting 29th April 2006

UN OCHA Trincomalee Office

Shelter/NFRI	Clothing	Food	Watsan	Health	Education
ASSISTANCE PROVIDED					
Shelter/NFRI	Clothing	Food	Watsan	Health	Education

9. IGL church

ASSISTANCE NEEDED					
Shelter/NFRI	Clothing	Food	Watsan	Health	Education
ASSISTANCE PROVIDED					
Shelter/NFRI	Clothing	Food	Watsan	Health	Education

10. St Anthony's church

ASSISTANCE NEEDED					
Shelter/NFRI	Clothing	Food	Watsan	Health	Education
ASSISTANCE PROVIDED					
Shelter/NFRI	Clothing	Food	Watsan	Health	Education

Assistance provided by SLRCS

Please note that stocks reported by agencies are not included as only a couple reported on what is available and there is no clear intention per geographic location.



SECOND DRAFT
 Information compiled by the Joint team of Trincomalee
 United Nations and Non Governmental Organisations
 Date of reporting 29th April 2006
 UN OCHA Trincomalee Office

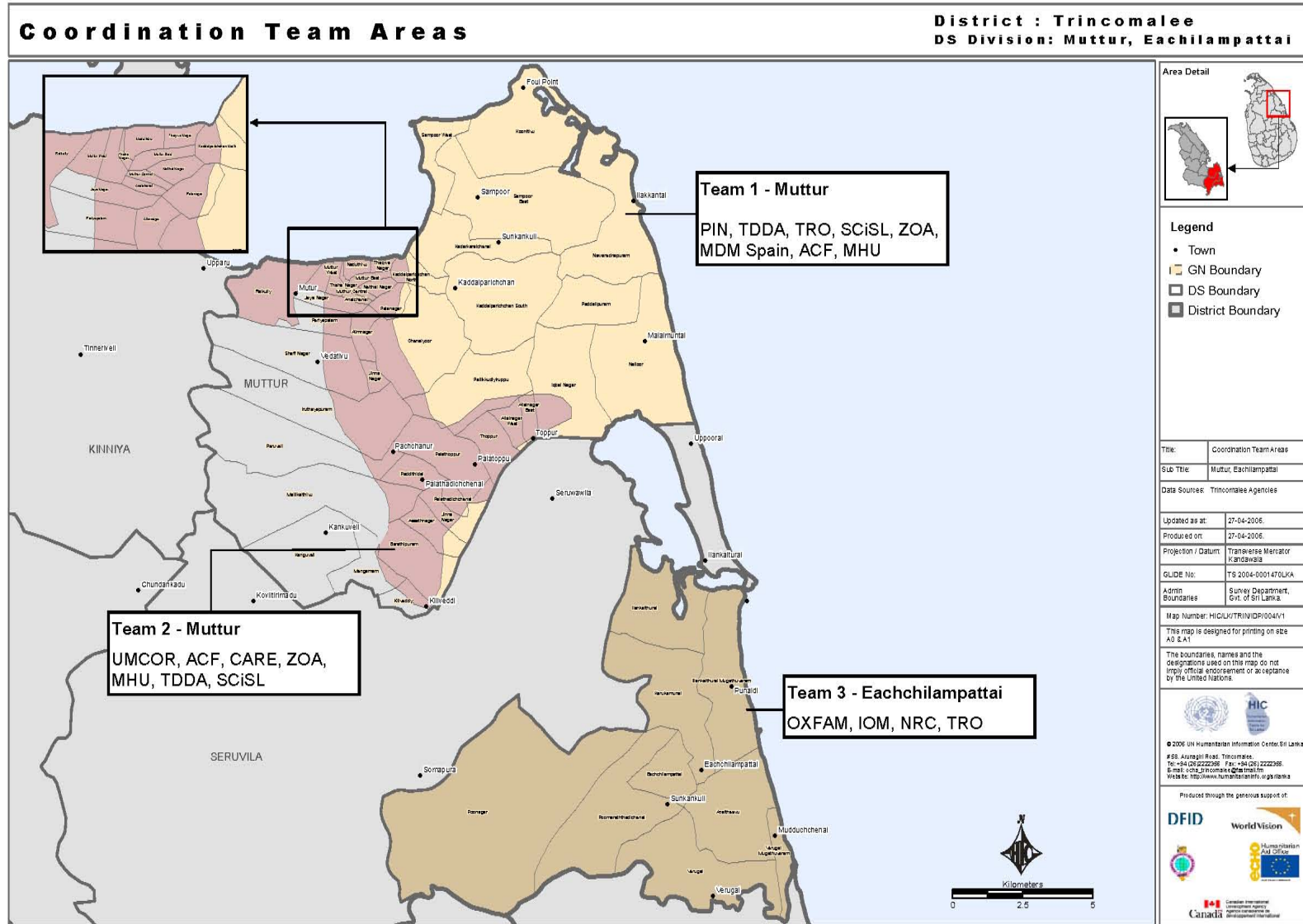


Administrative Map		DISTRICT: Trincomalee																					
DS Divisions																							
Area Detail 	Legend <ul style="list-style-type: none"> ● Town — Main Road - - - Secondary Road ■ DS Division □ District 	Notes <p>This road data is from the Survey Department. Some roads originally classified as tracks are shown here as secondary roads due to their local importance and frequent usage by the local community.</p>	<table border="1"> <tr> <td>Data source:</td> <td>Survey Department, Govt of Sri Lanka</td> </tr> <tr> <td>Updated as at:</td> <td>28-02-2006</td> </tr> <tr> <td>Produced on:</td> <td>20-02-2006</td> </tr> <tr> <td>Production / Contact:</td> <td>Trincomalee Mercator</td> </tr> <tr> <td>SLIDE number:</td> <td>TS 2004-00014701A</td> </tr> <tr> <td>Admin boundaries:</td> <td>Survey Department, Govt of Sri Lanka</td> </tr> </table> <table border="1"> <tr> <td>Map Number:</td> <td>HS/UT/TH/ADM/01/02</td> </tr> <tr> <td colspan="2">This map is designed for printing on A0 size. The boundaries, names and the designations shown on this map do not imply official endorsement or acceptance by the United Nations.</td> </tr> <tr> <td colspan="2" style="text-align: center;"> </td> </tr> <tr> <td colspan="2"> © 2006 UN Humanitarian Information Center Sri Lanka #20 Anuraghi Rd, Trincomalee Tel: +94 (0) 2222266 / Fax: +94 (0) 2222265 Email: info_trincomalee@unocha.lk http://www.humanitarianinformation.org/srilanka </td> </tr> </table>	Data source:	Survey Department, Govt of Sri Lanka	Updated as at:	28-02-2006	Produced on:	20-02-2006	Production / Contact:	Trincomalee Mercator	SLIDE number:	TS 2004-00014701A	Admin boundaries:	Survey Department, Govt of Sri Lanka	Map Number:	HS/UT/TH/ADM/01/02	This map is designed for printing on A0 size. The boundaries, names and the designations shown on this map do not imply official endorsement or acceptance by the United Nations.				© 2006 UN Humanitarian Information Center Sri Lanka #20 Anuraghi Rd, Trincomalee Tel: +94 (0) 2222266 / Fax: +94 (0) 2222265 Email: info_trincomalee@unocha.lk http://www.humanitarianinformation.org/srilanka	
Data source:	Survey Department, Govt of Sri Lanka																						
Updated as at:	28-02-2006																						
Produced on:	20-02-2006																						
Production / Contact:	Trincomalee Mercator																						
SLIDE number:	TS 2004-00014701A																						
Admin boundaries:	Survey Department, Govt of Sri Lanka																						
Map Number:	HS/UT/TH/ADM/01/02																						
This map is designed for printing on A0 size. The boundaries, names and the designations shown on this map do not imply official endorsement or acceptance by the United Nations.																							
© 2006 UN Humanitarian Information Center Sri Lanka #20 Anuraghi Rd, Trincomalee Tel: +94 (0) 2222266 / Fax: +94 (0) 2222265 Email: info_trincomalee@unocha.lk http://www.humanitarianinformation.org/srilanka																							
		Produced through the generous support of: 																					

Please note that stocks reported by agencies are not included as only a couple reported on what is available and there is no clear intention per geographic location.



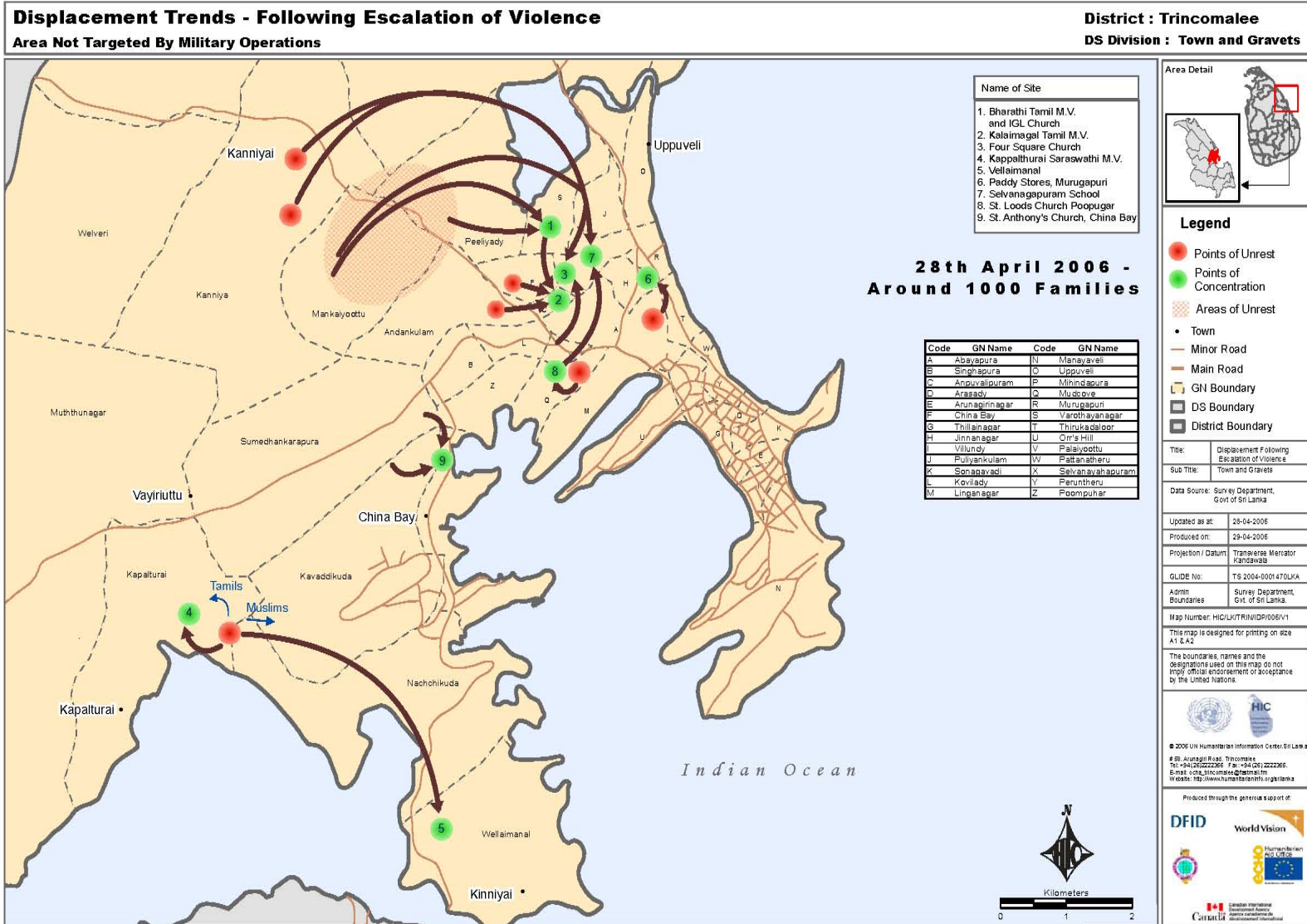
SECOND DRAFT
 Information compiled by the Joint team of Trincomalee
 United Nations and Non Governmental Organisations
 Date of reporting 29th April 2006
 UN OCHA Trincomalee Office



Please note that stocks reported by agencies are not included as only a couple reported on what is available and there is no clear intention per geographic location.



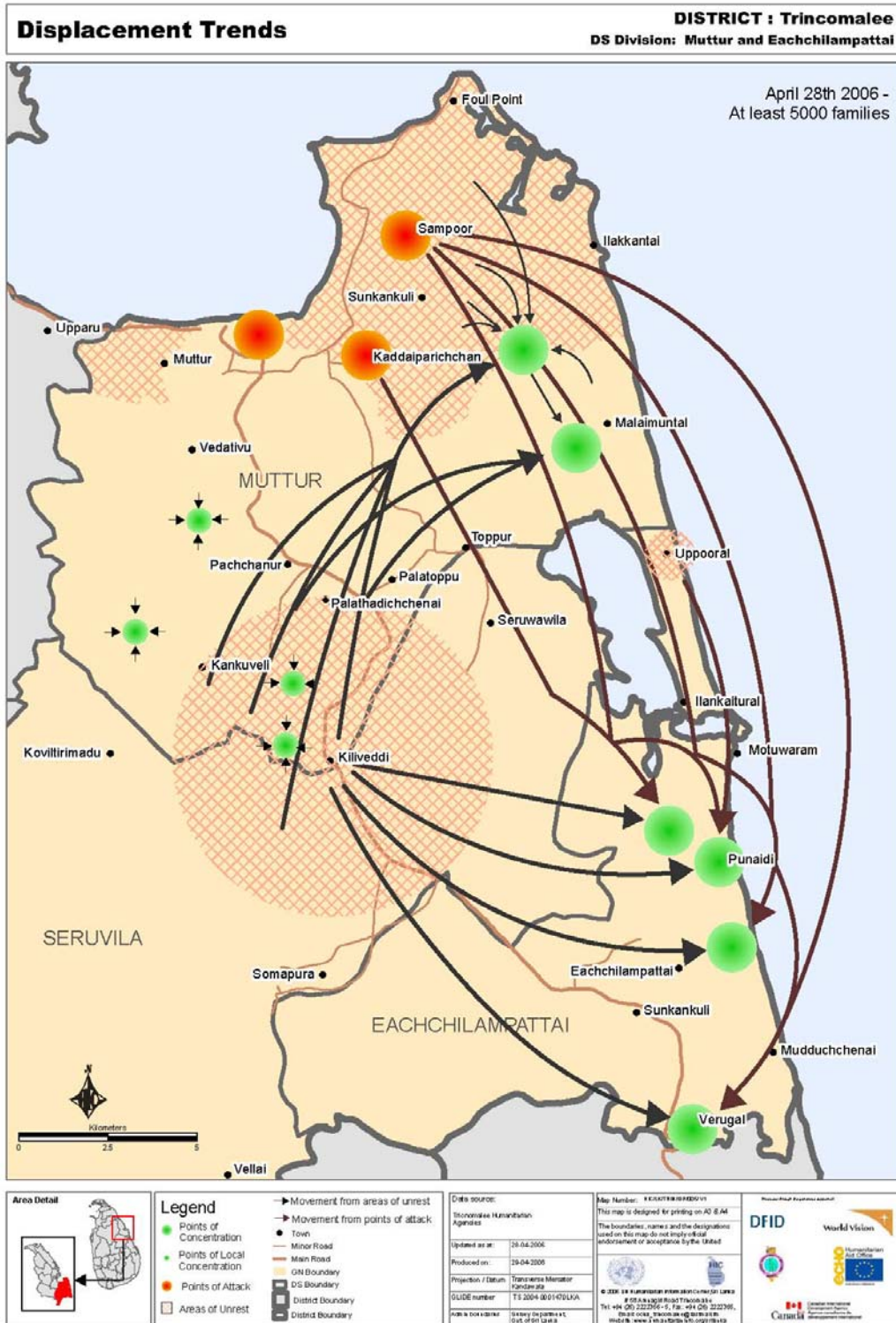
SECOND DRAFT
 Information compiled by the Joint team of Trincomalee
 United Nations and Non Governmental Organisations
 Date of reporting 29th April 2006
 UN OCHA Trincomalee Office



Please note that stocks reported by agencies are not included as only a couple reported on what is available and there is no clear intention per geographic location.



SECOND DRAFT
Information compiled by the Joint team of Trincomalee
United Nations and Non Governmental Organisations
Date of reporting 29th April 2006
UN OCHA Trincomalee Office



Please note that stocks reported by agencies are not included as only a couple reported on what is available and there is no clear intention per geographic location.